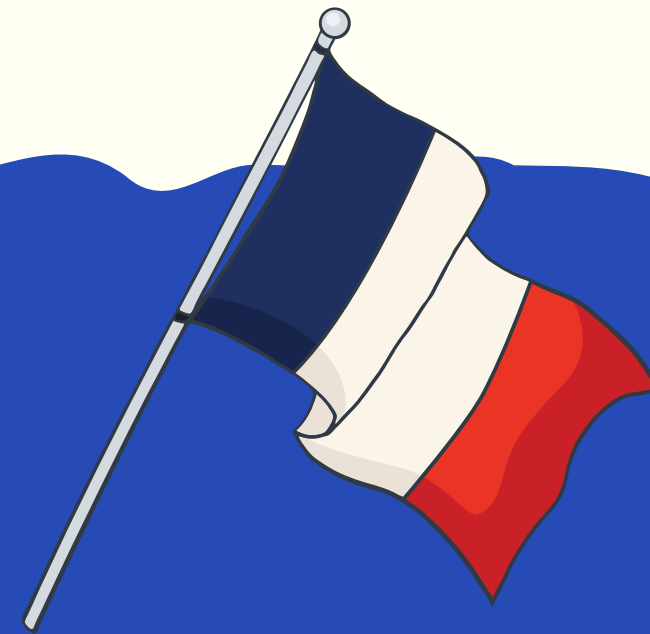
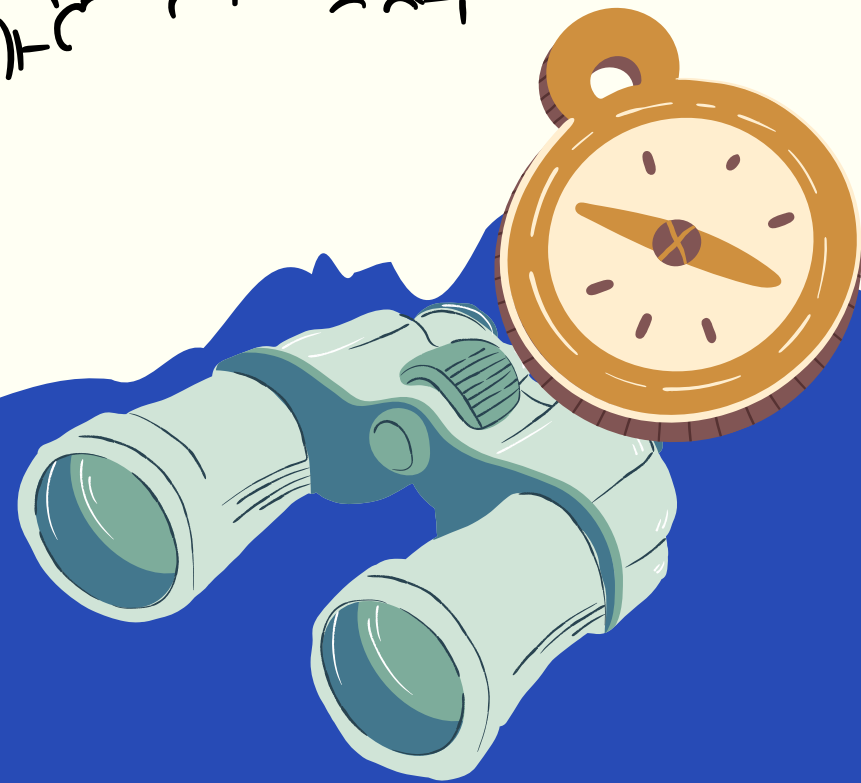
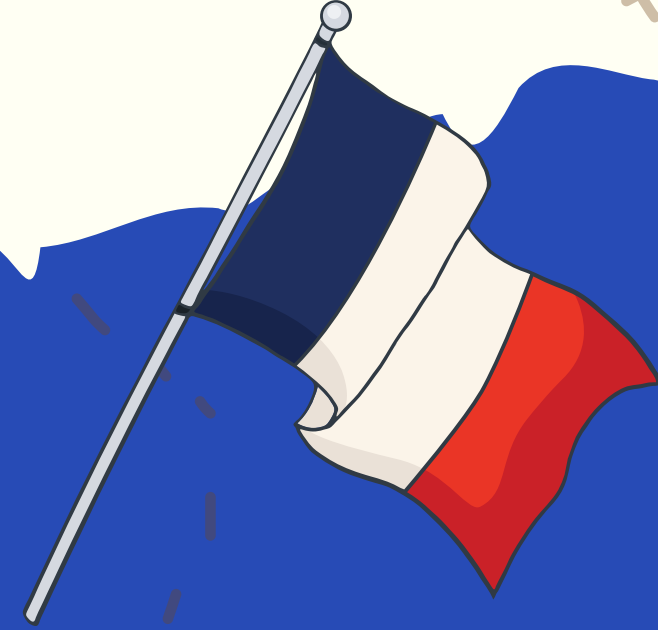


Quiz

All About France





How to Play:



01

Read the
questions
carefully.

02

Choose the
correct
answer.

03

A point will be
given for each
correct
answer.



**Are you ready
to play?**



Which sea borders southern France?

A

The mediterranean
sea

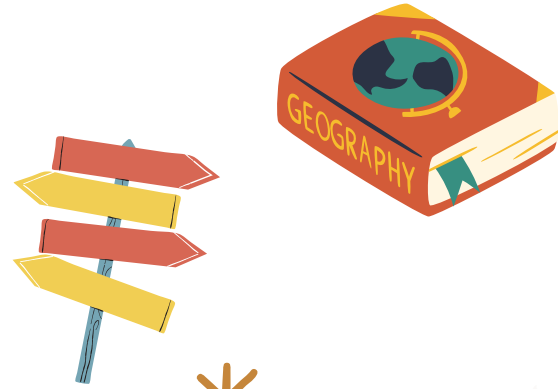
B

The Black Sea

C

The Baltic Sea





The mediterranean sea

The Mediterranean Sea borders southern France and also touches countries like Spain, Italy, and Greece.





What languages do people speak in Corsica?

A

French

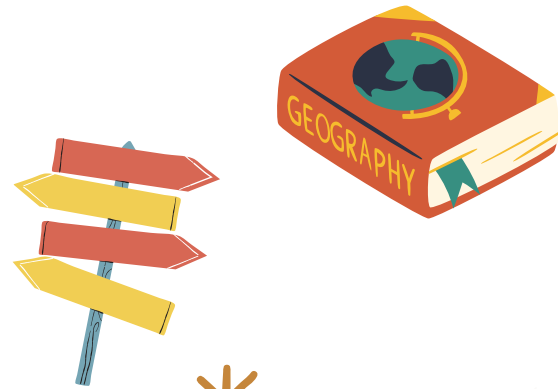
B

Italian

C

Corsican

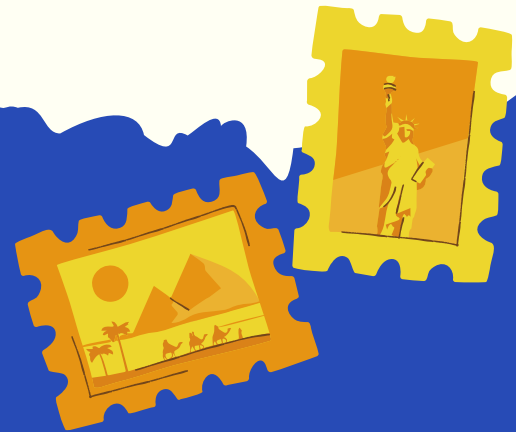




French and Corsican!

People in Corsica speak French and Corsican, a local language that sounds a bit like Italian.





03
1

Who lived in France before the Romans arrived?

A

The Vikings

B

The Egyptians

C

The Gauls





The Gauls

The Gauls, a Celtic tribe, lived in France before the Romans came and built cities and roads. The Gauls lived in tribes, built wooden houses and forts, wore clothes made from wool, and were known for their fierce warriors and skilled metalwork. They also worshipped many gods and loved storytelling, music, and feasts!





What is the name of the currency used in France?

A

Dollar

B

Pound

C

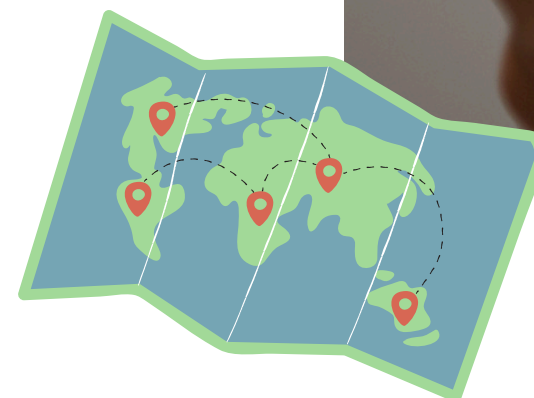
Euro





The euro!

France has used the euro as its currency since 1999. The euro (€) is the official currency of 20 out of 27 EU member countries, which together constitute the Eurozone, officially called the euro area.





Which one of these famous landmarks is located in France?

A

Mont Saint-
Michel

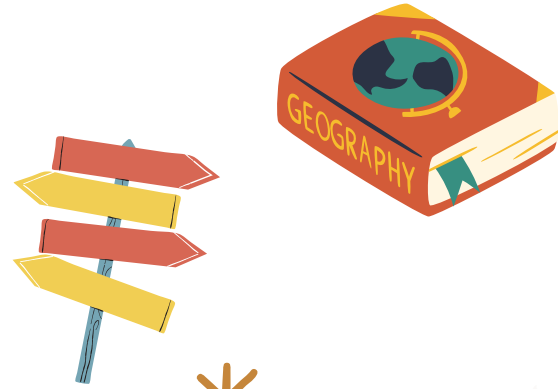
B

Big Ben

C

The Tower of
Pisa





Mont Saint-Michel!

Mont Saint-Michel has a very long history that started more than 1,300 years ago! According to legend, in the year 708, the Archangel Michael appeared to a local bishop and told him to build a church on the rocky island. Over the centuries, monks lived there and built a large abbey, turning the island into a place of worship and pilgrimage.





In the snowy mountains of France, you can find animals like ibex, marmots, and golden eagles.

A

True

B

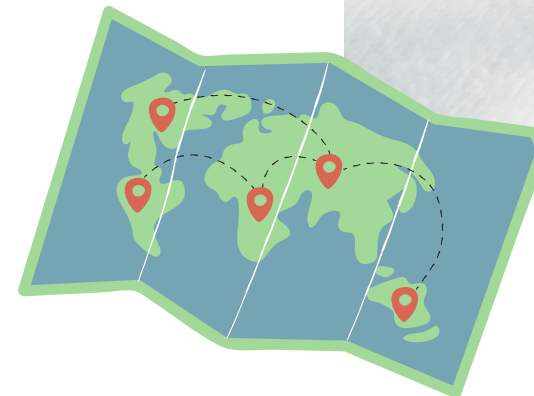
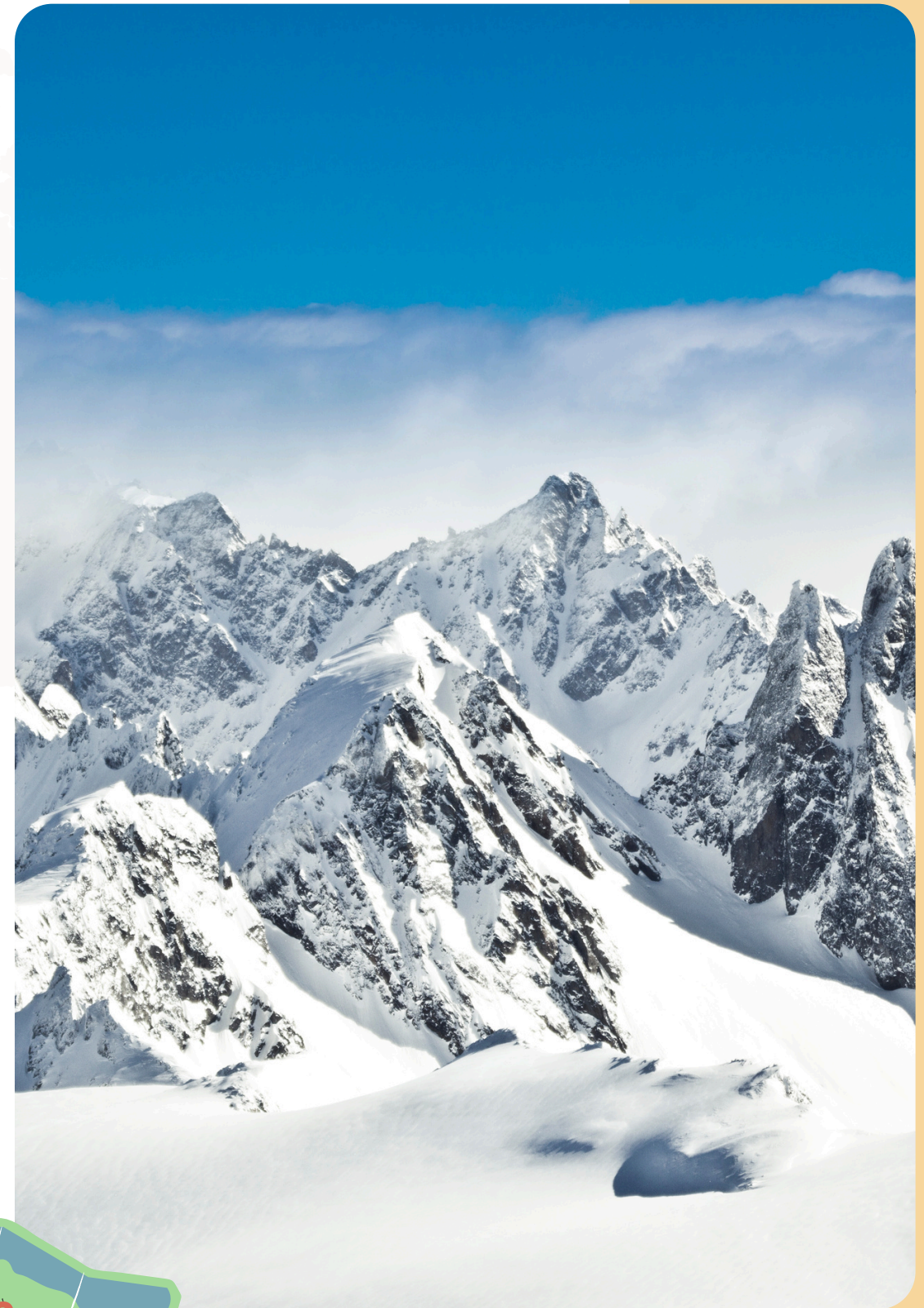
False





True!

The snowy Alps and Pyrenees are home to ibex (wild goats), marmots (big ground squirrels), and golden eagles that soar high above the mountains. These animals are specially adapted to live in cold, rocky places..





Match each French festival to what it celebrates or when it happens

Bastille Day

Cannes Film
Festival

Fête de la Musique

A. A music festival on June 21st with musicians playing in the streets

B. A big national holiday with parades and fireworks on July 14th

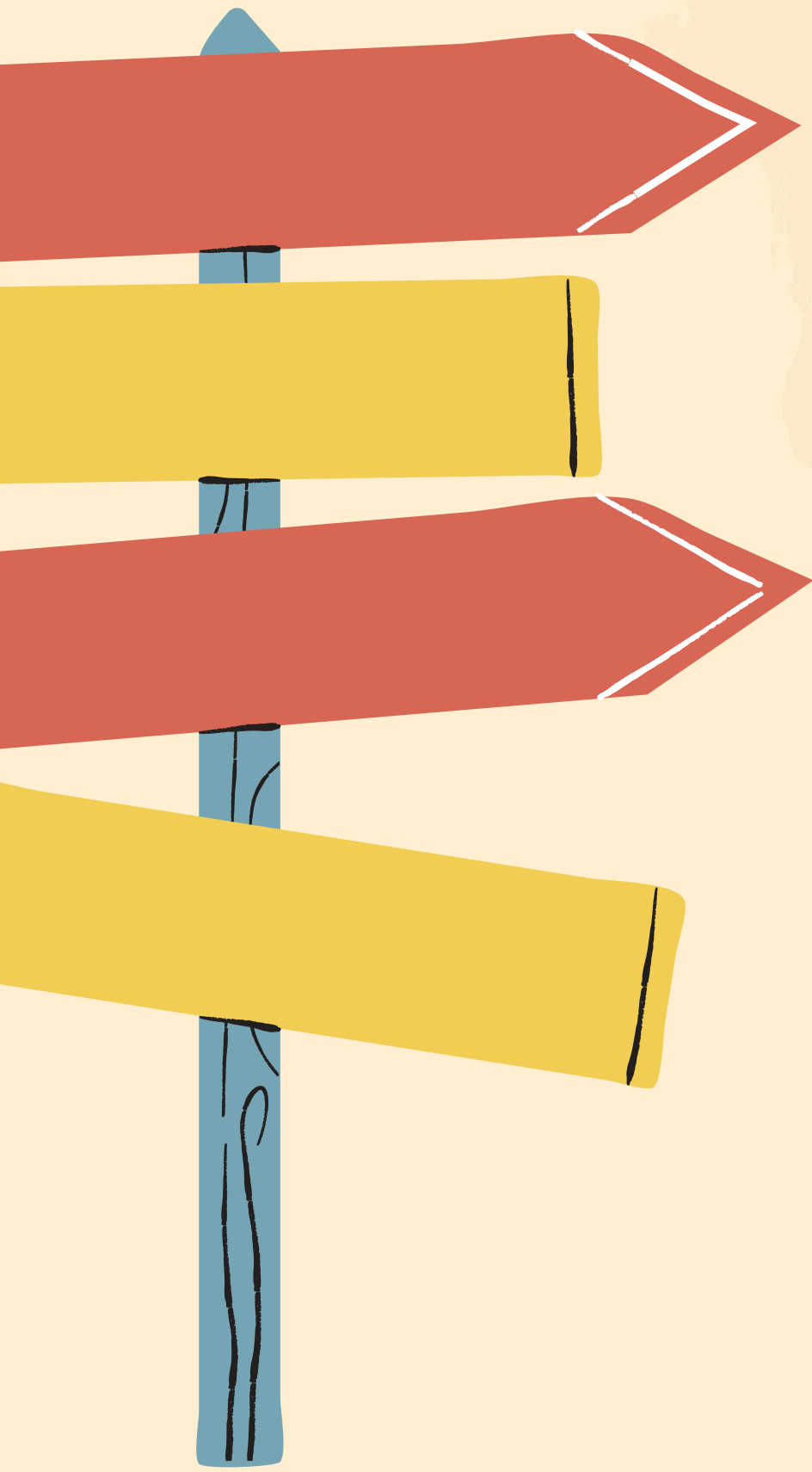
C. A spring event where people celebrate movies and meet actors





Festival de Cannes - C
Fete de la musique - A
Bastille Day - B





**How many points did
you get?**



Check your rank level!

7-6

Adventurer

5-4

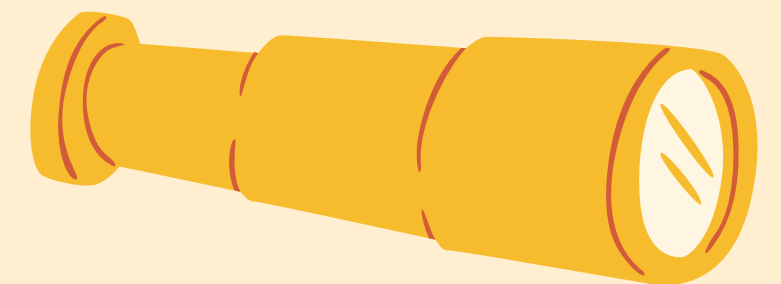
Traveler

3-2

Tourist

1-0

Amateur Tourist



WANT TO TRAVEL THE WORLD THROUGH ADVENTURE STORIES?

Join our newsletter on www.thelittleexplorersjournal.com

