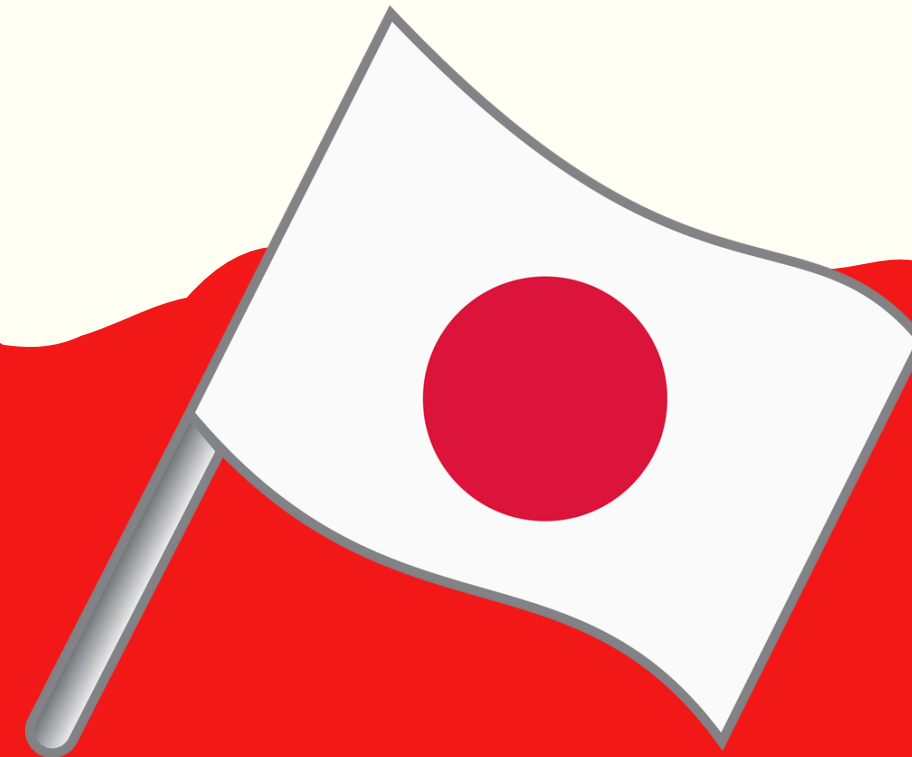
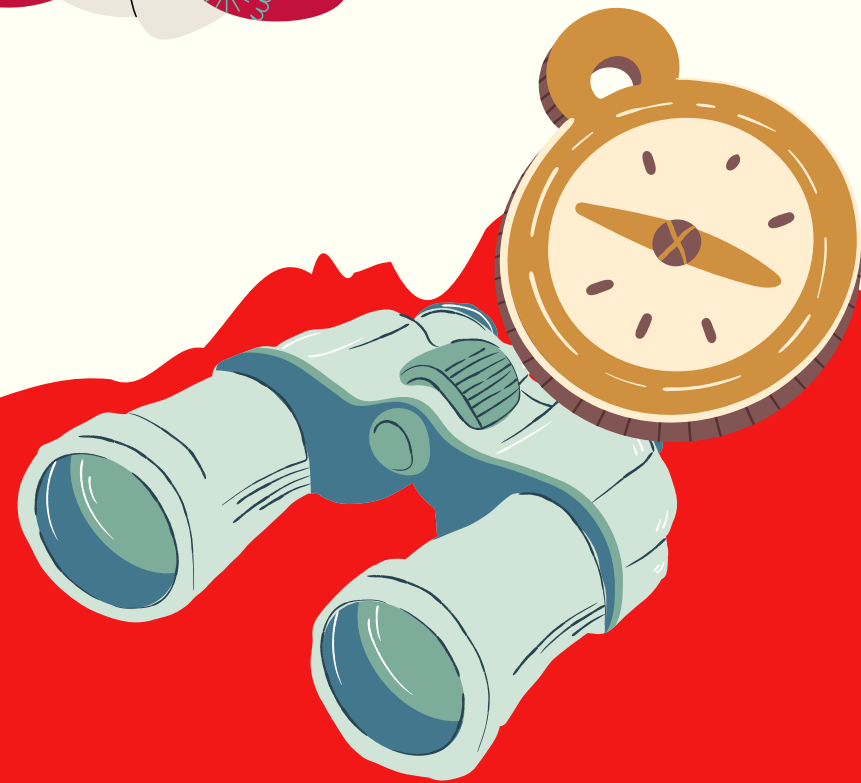


**Quiz**

# **All About Japan**





# How to Play:



**01**

Read the  
questions  
carefully.

**02**

Choose the  
correct  
answer.

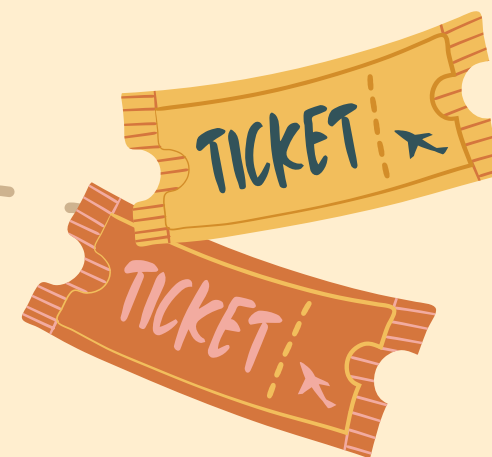
**03**

A point will be  
given for each  
correct  
answer.





**Are you ready  
to play?**





**What is the name of Japan's famous high-speed train?**

**A**

The Shinkansen

**B**

Metro Rapid

**C**

Ninja Express







# The Shinkansen

The Shinkansen, also known as the bullet train, travels up to 320 km/h and connects Japan's major cities.





# What is Japan's capital city?

**A**

Osaka

**B**

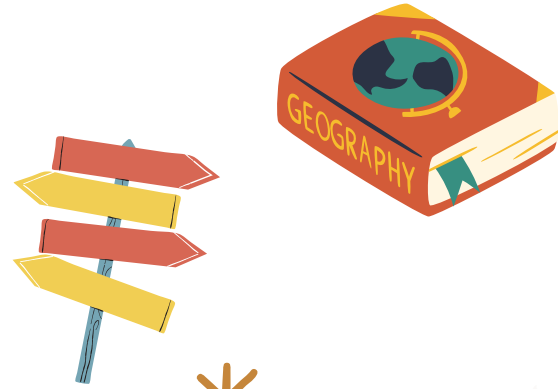
Tokyo

**C**

Kyoto

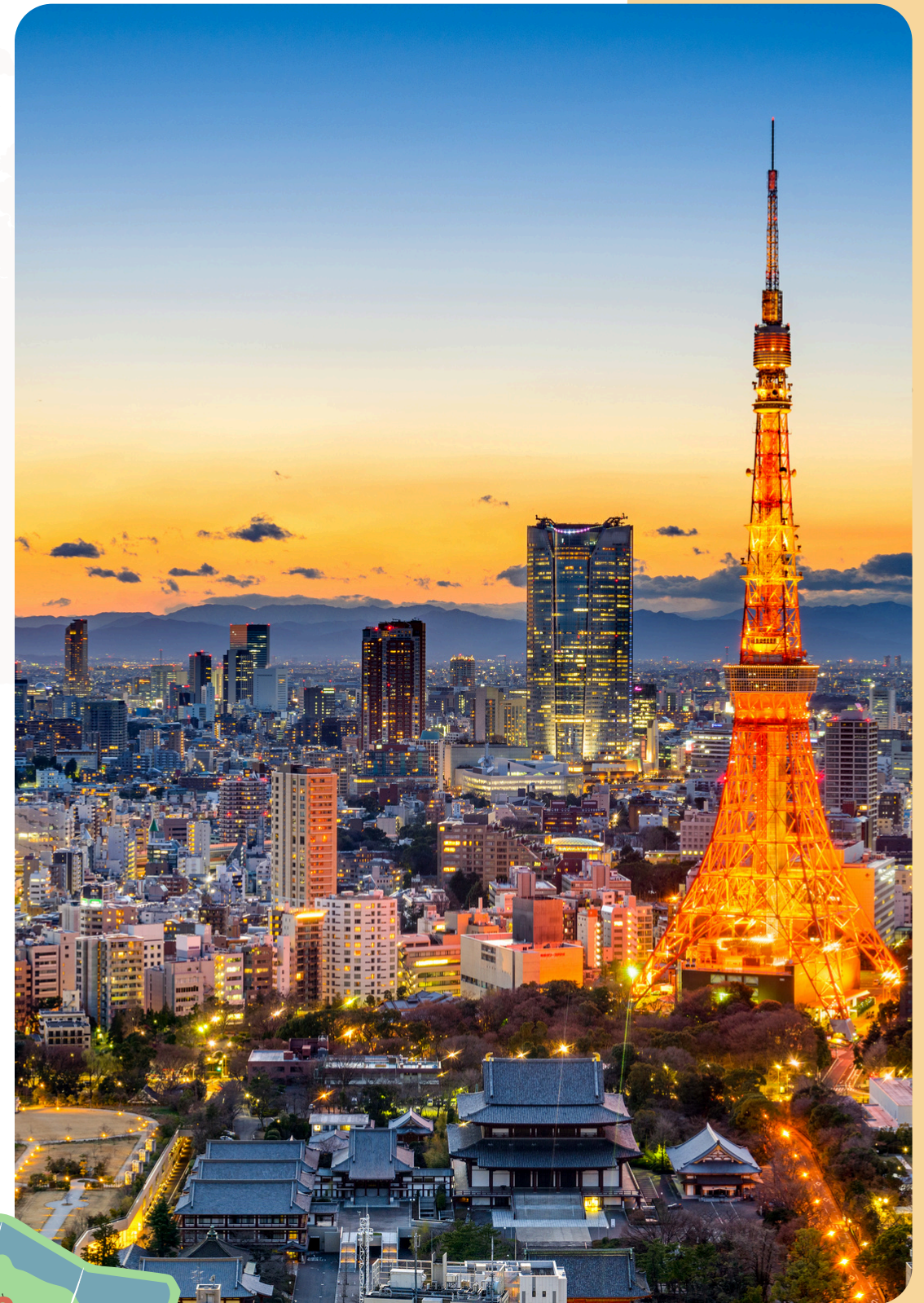


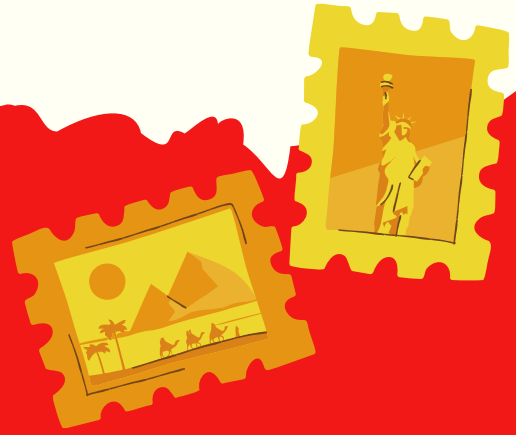




# Tokyo

Tokyo is the capital and one of the busiest, most high-tech cities in the world.





03  
1

**What animal is known for bathing in hot springs in Japan?**

**A**

Flying squirrel

**B**

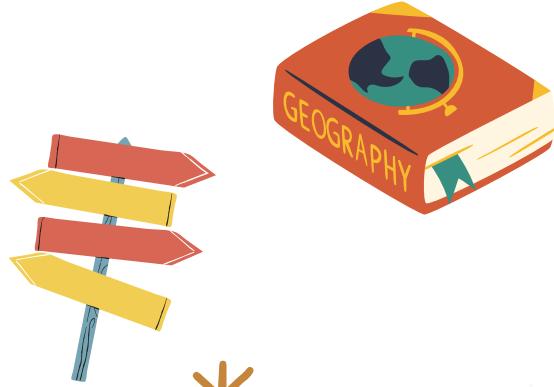
Snow monkeys

**C**

Tanuki







# Snow monkeys

The Japanese macaque, also known as the snow monkey, lives in snowy mountain areas like Nagano. To stay warm in the freezing winter, they bathe in natural hot springs (called onsen)—just like humans! They're the only monkeys in the world known to do this.





**What is Japan's most important crop?**

**A**

Rice

**B**

Wheat

**C**

Corn





# Rice!

Rice is the heart of Japanese cuisine and has been grown in Japan for thousands of years. It's not just a food. It's part of daily life and tradition. From sushi and onigiri (rice balls) to rice served plain alongside most meals, it plays a starring role on the table. It's also used in sweet treats like mochi and in special ceremonies and festivals. \*







**What is the name of Japan's national sport?**

**A**

Karate

**B**

Basketball

**C**

Sumo wrestling





# Sumo wrestling

Sumo wrestling is Japan's national sport and one of the oldest sports in the world, with traditions going back over 1,500 years. It began as a ritual to entertain the gods and bring good harvests. In sumo, two massive wrestlers try to push each other out of a ring or make their opponent touch the ground with anything other than their feet.





**During the Tanabata Festival, people in Japan write their wishes on colorful paper and hang them on bamboo trees.**

**A**

True

**B**

False





# True!

Tanabata, also known as the Star Festival, is based on an ancient legend about two star-crossed lovers who can only meet once a year. To celebrate, people write their hopes and dreams on colorful strips of paper called tanzaku and hang them on bamboo branches, turning streets and homes into magical, wish-filled displays.





# Match each Japanese tradition to what it is best known for:

Origami

Kabuki Theatre

Ikebana

A. A dramatic art form with elaborate costumes and stylised movement.

B. The practice of arranging flowers to express beauty through simplicity and balance.

C. The disciplined folding of paper into animals or objects without cutting or glue.

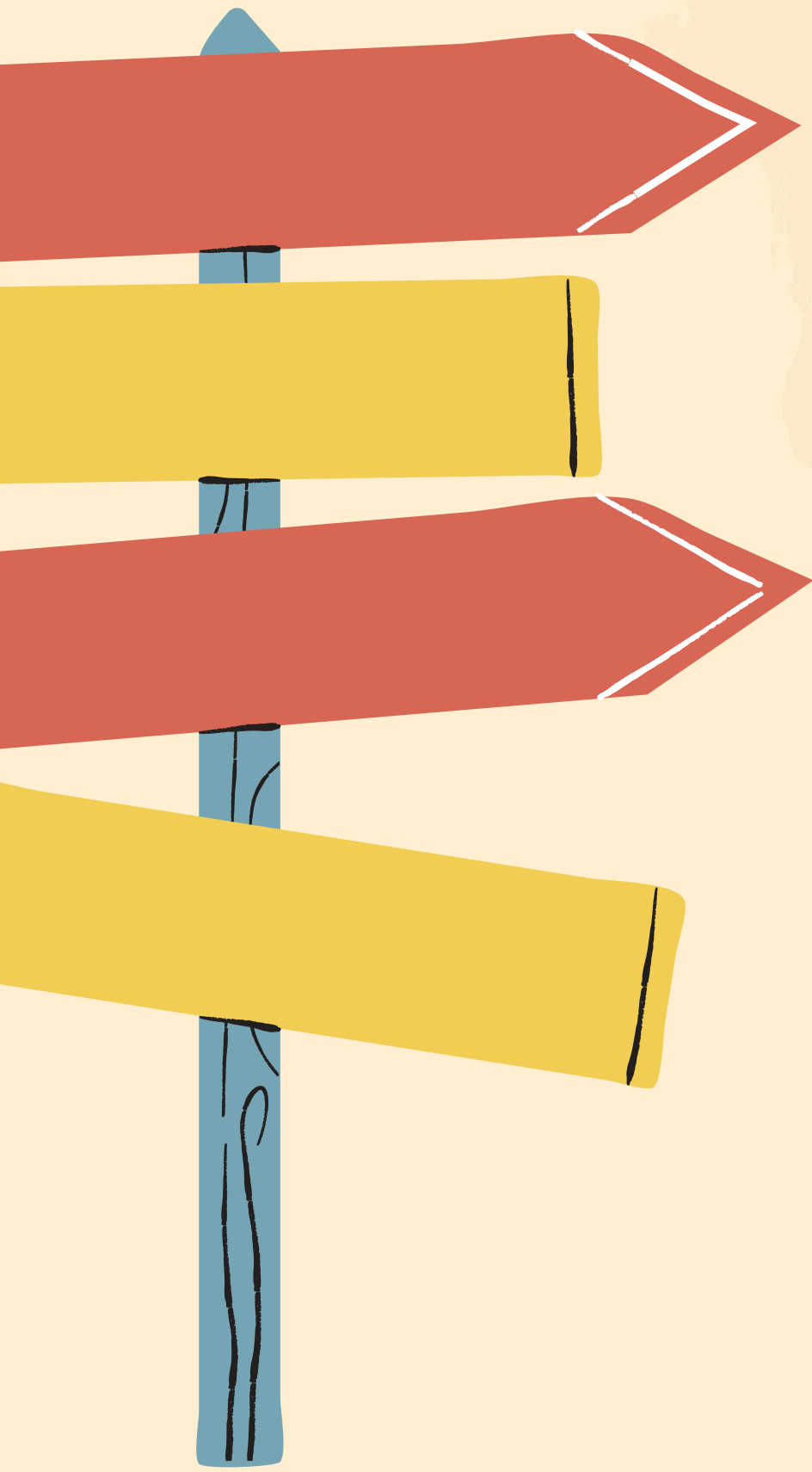






**Origami - C**  
**Kabuki Theatre - A**  
**Ikebana - B**





**How many points did  
you get?**



# Check your rank level!

7-6

Adventurer

5-4

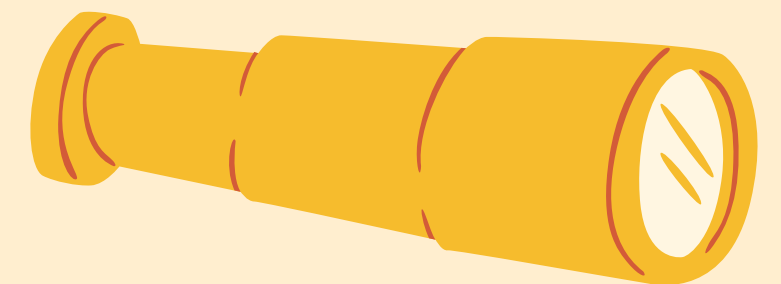
Traveler

3-2

Tourist

1-0

Amateur Tourist



# Certificate of Achievement

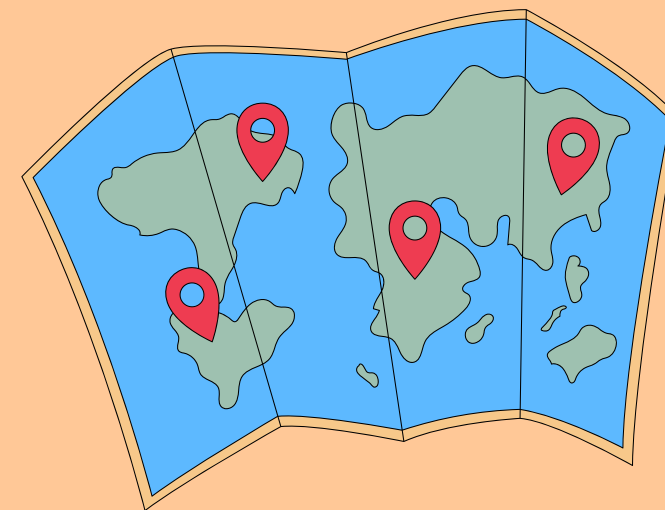


**Awarded to:** \_\_\_\_\_

For completing the "Discover Japan" Quiz with curiosity and courage!  
You explored Japan's traditions, nature, and amazing inventions and  
showed what a brilliant Little Explorer you are.

Keep exploring, learning, and dreaming big.

The Little Explorers Journal



# WANT TO TRAVEL THE WORLD THROUGH ADVENTURE STORIES?

Join our newsletter on [www.thelittleexplorersjournal.com](http://www.thelittleexplorersjournal.com)

